



Golding Crescent

Earls Barton, Northamptonshire

oriordanbond
SALES & LETTINGS



Golding Crescent

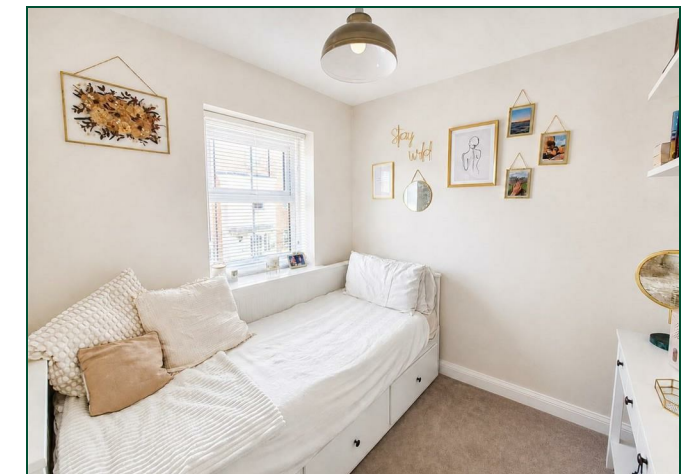
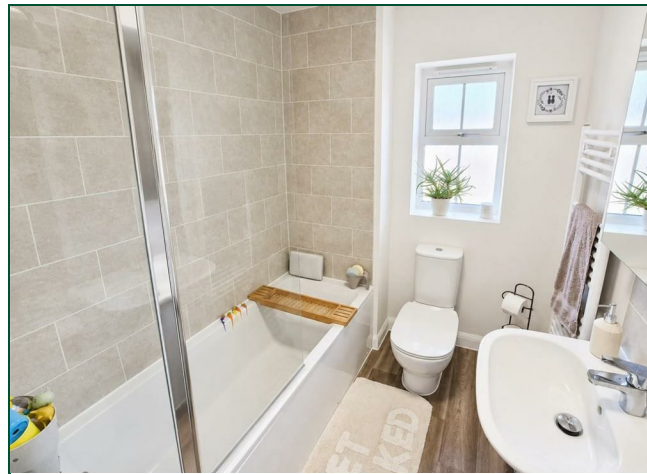
Earls Barton
NN6 0FT

Price
£310,000

A beautifully presented three bedroom semi-detached family home, positioned on a good size plot, with driveway for parking two cars and landscaped rear garden. Built by Messrs David Wilson Homes, the property is located on the sought after Wickets development within sought after Earls Barton.

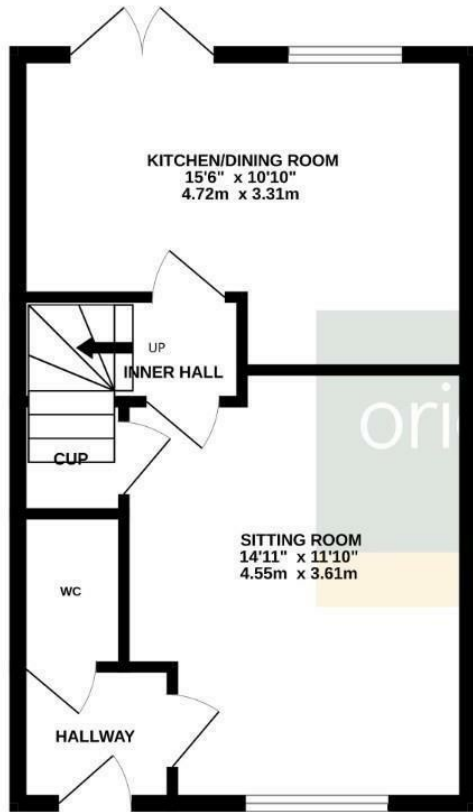
Accommodation comprises entrance hall, cloakroom/WC, good size sitting room, a stunning kitchen/dining room with fitted appliances and French doors to a larger than average enclosed rear garden, first floor landing, master bedroom with en-suite shower room and fitted wardrobe, two further bedrooms and a family bathroom. Outside is a front garden with lawn and a driveway to the side providing off road parking for two cars. To the rear is a landscaped garden which is fully enclosed with lawn and paved patio area for seating with wooden shed for storage and gated access to the driveway. Further benefits include uPVC double glazing, gas radiator heating and remaining NHBC certificate. (A/805M)

- Beautifully presented three bedroom semi-detached family home
- En-suite to master bedroom
- Stunning kitchen/dining room with fitted appliances
- Gas radiator heating
- Enclosed landscaped rear garden
- Off road parking

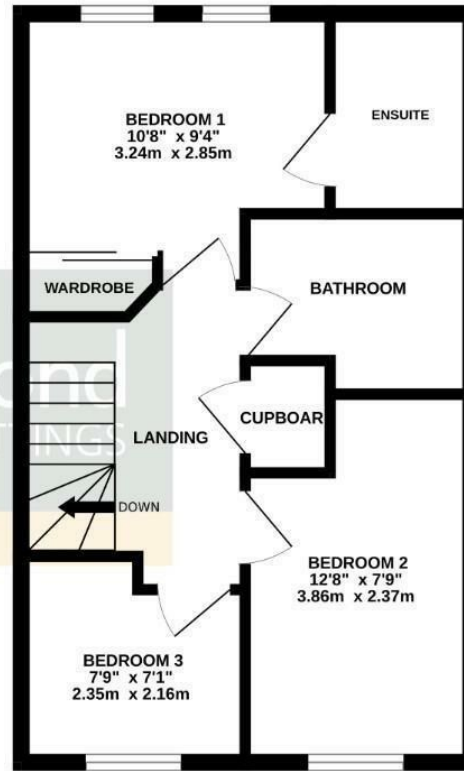




GROUND FLOOR



1ST FLOOR



TOTAL FLOOR AREA : 805 sq.ft. (74.8 sq.m.) approx.

Whilst every attempt has been made to ensure the accuracy of the floorplan contained here, measurements of doors, windows, rooms and any other items are approximate and no responsibility is taken for any error, omission or mis-statement. This plan is for illustrative purposes only and should be used as such by any prospective purchaser. The services, systems and appliances shown have not been tested and no guarantee as to their operability or efficiency can be given.
Made with Metropix ©2025



Additional information

- Council Tax Band: C
- Energy Efficiency Rating: B

Viewing

Viewing strictly by appointment – details below

Disclaimer

O’Riordan Bond Estate Agents Limited has not tested apparatus, equipment, fittings or services and so cannot verify they are in working order. The buyer is advised to obtain verification from their solicitor or surveyor.

O’Riordan Bond Earls Barton Sales

01604 810088

earlsbarton@oriordanbond.co.uk

